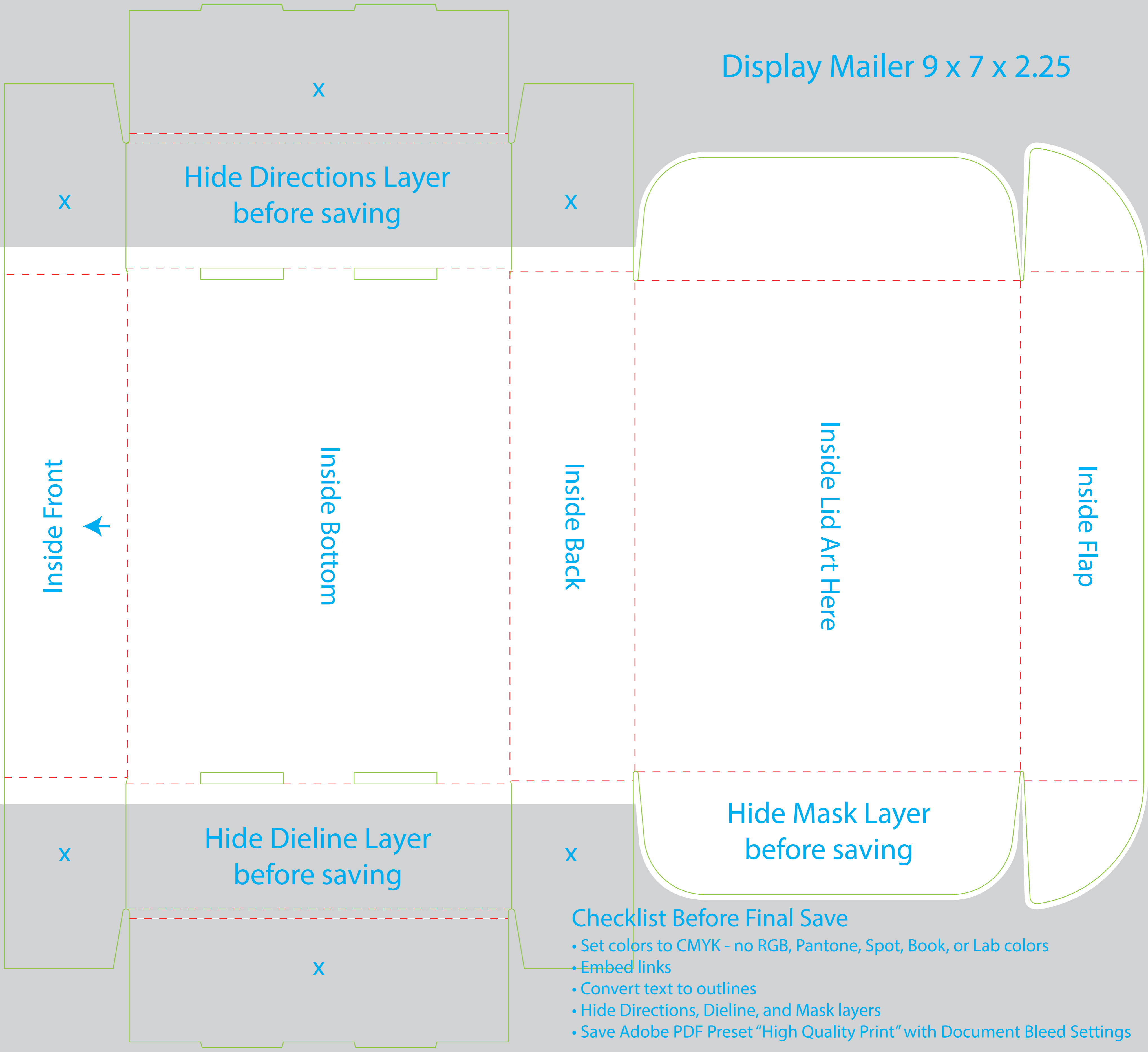


# Display Mailer 9 x 7 x 2.25



Hide Directions Layer  
before saving

Inside Front



Inside Bottom

Inside Back

Inside Lid Art Here

Inside Flap

Hide Dieline Layer  
before saving

x

x

x

## Checklist Before Final Save

- Set colors to CMYK - no RGB, Pantone, Spot, Book, or Lab colors
- Embed links
- Convert text to outlines
- Hide Directions, Dieline, and Mask layers
- Save Adobe PDF Preset "High Quality Print" with Document Bleed Settings

Hide Mask Layer  
before saving